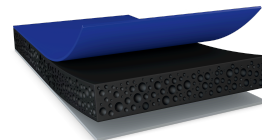




# tesa® ACXplus 7811 Black Line



## Product Information

1.1 mm double-sided acrylic foam tape for mounting applications in automotive

## Product Description

tesa® ACX<sup>plus</sup> 7811 Black Line is a deep black double-sided acrylic foam tape for mounting applications in automotive. It provides high bonding power on MSE clear coats and plastics like ABS and chromed ABS, and performs outstandingly on PC and PMMA. Its impressive cold shock resistance is based on a modified acrylic foam core, which assures a reliable bond even at extreme low temperatures. This exceptional capability enables tesa® ACX<sup>plus</sup> 7811 Black Line to compensate for extreme physical stress caused by different thermal elongation of bonded parts in changing temperature conditions. Also available in 0.5 mm, 0.8 mm, 1.2 mm, 1.5 mm and 2.0 mm formats.

## Product Features

- Deep black color for enhanced appearance and design flexibility
- Excellent cold shock performance
- High humidity and UV resistance
- Superior push out resistance also at high temperatures
- PFAS / PFOS free Product
- Closed cell acrylic foam core
- Viscoelastic acrylic foam core to compensate for thermal elongation differences of bonded parts
- Being viscoelastic, tesa® ACX<sup>plus</sup> 7811 Black Line optimally absorbs and dissipates dynamic and static loads.

## Application Fields

The tesa® ACX<sup>plus</sup> 7811 Black Line is suitable for a wide range of exterior attachment part as well as interior display mounting applications.

Example applications for exterior mounting are:

- \* protective trims like wheel arches and rocker panels
- \* Decorative trims
- \* Pillar appliques
- \* Antennas
- \* Emblems



# tesa® ACXplus 7811 Black Line

## Product Information

### Application Fields

Example applications for interior mounting are:

- \* Frame mounting of interior displays
- \* Head up displays
- \* Center stack displays
- \* Cluster displays

To ensure the highest performance possible, our aim is to fully understand your application (including the substrates involved) in order to provide the right product recommendation.

## Technical Information (average values)

The values in this section should be considered representative or typical only and should not be used for specification purposes.

### Product Construction

- |                    |                       |                   |            |
|--------------------|-----------------------|-------------------|------------|
| • Backing material | foamed acrylic        | • Total thickness | 1100 µm    |
| • Type of adhesive | modified acrylic      | • Color           | deep black |
| • Type of liner    | PE/PP protection film |                   |            |

### Properties/Performance Values

- |                          |           |                       |           |
|--------------------------|-----------|-----------------------|-----------|
| • Elongation at break    | 1400 %    | • Humidity resistance | very good |
| • Ageing resistance (UV) | very good |                       |           |

### Adhesion to Values

- |                      |         |                        |         |
|----------------------|---------|------------------------|---------|
| • ABS (after 3 days) | 24 N/cm | • Steel (after 3 days) | 32 N/cm |
|----------------------|---------|------------------------|---------|

### Additional Information

PV 25 = White siliconised PE-coated paper liner.

PV 29 = Blue heat sealable and adhesive tabable film liner.

Adhesion data are based on PV25 liner.



# tesa® ACXplus 7811 Black Line

## Product Information

### Disclaimer

tesa® products prove their impressive quality day in, day out in demanding conditions and are regularly subjected to strict controls. All information and recommendations are provided to the best of our knowledge on the basis of our practical experience. Nevertheless tesa SE can make no warranties, express or implied, including, but not limited to any implied warranty of merchantability or fitness for a particular purpose. Therefore, the user is responsible for determining whether the tesa® product is fit for a particular purpose and suitable for the user's method of application. If you are in any doubt, our technical support staff will be glad to support you.